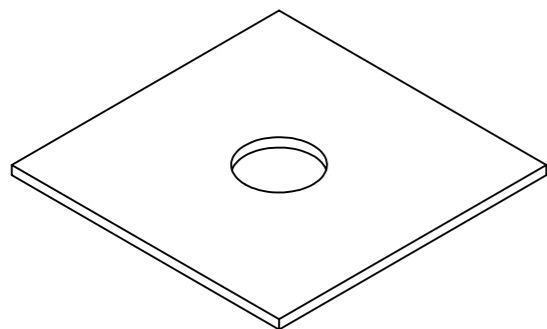


Tipos de chapas para cavilhas

As chapas para cavilhas tem tolerâncias de $\pm 0,2\text{mm}$ na espessura e de $\pm 0,2\text{mm}$ na largura e comprimento.

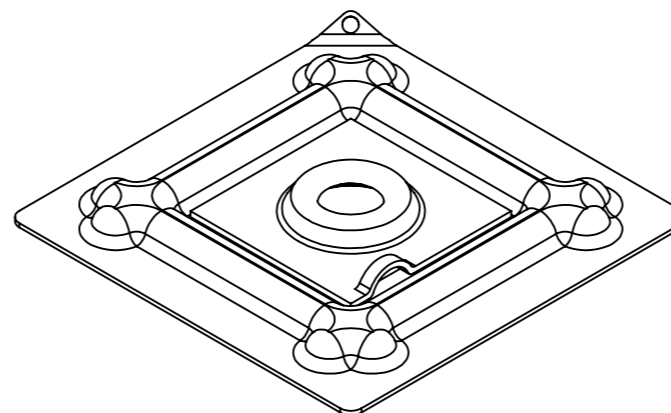
Chapa reta

Referencia	Medidas em mm	Ø do furo
1038 0150-50	150x150x5	38
2042 0150-50	150x150x5	42
2042 0150-22	150x150x6,4	22
2042 0150-28	150x150x6,4	28
2042 0200-22	200x200x6,4	22
2042 0200-28	200x200x6,4	28



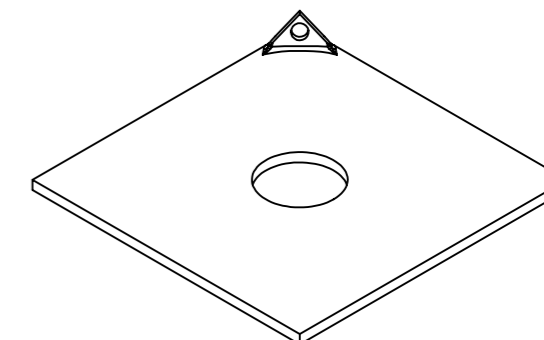
Chapa borboleta Dupla

Referencia	Medidas em mm	Ø do furo
2042 0300 60	300x300+150x150	42



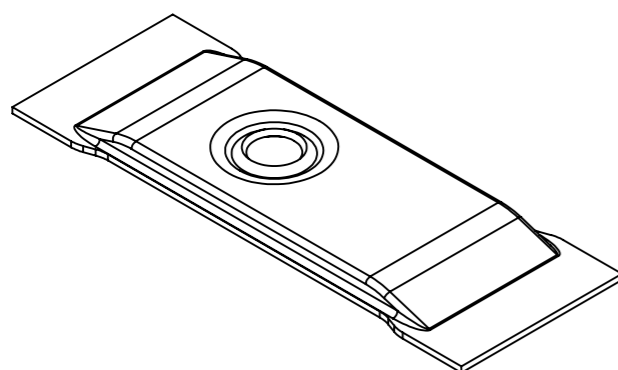
Chapa de aba virada

Referencia	Medidas em mm	Ø do furo
1038 0150-51	150x150x5	38
2042 0150-51	150x150x5	42
2042 0200-1"	200x200x6,4	1"
2042 0200-3/4"	200x200x6,4	3/4"



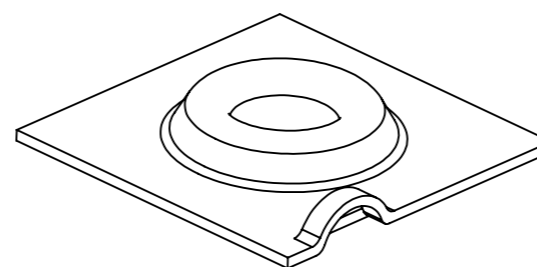
Chapa retangular nervurada

Referencia	Medidas em mm	Ø do furo
2042 0420-51	150x420x5	42
2042 0420-51	150x420x5	38
2042 0420-51	150x420x5	20



Chapa borboleta

Referencia	Medidas em mm	Ø do furo
2042 0150 90	150x150x5	42



Chapa boleada

Referencia	Medidas em mm	Ø do furo
2042 0150-1"	150x150x6,4	1"
2042 0150-3/4"	150x150x6,4	3/4"
2042 0200-1"	200x200x6,4	1"
2042 0200-3/4"	200x200x6,4	3/4"

